

FUEL KIT 1 RV / FUEL KIT 2 FC2 / FUEL KIT 4 RK4
IF REQUIRED

FUEL KIT 1 RV / FUEL KIT 4 RK4
IF REQUIRED

FUEL KIT 2 FC2 / FUEL KIT 4 RK4
IF REQUIRED

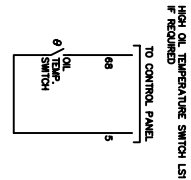
LOW LOW FUEL LEVEL SWITCH FS1
IF REQUIRED

LOW FUEL LEVEL SWITCH FS2
IF REQUIRED

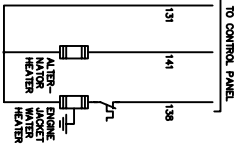
LOW FUEL LEVEL SWITCH FS2 & RV/2/A
IF REQUIRED

LOW WATER TEMPERATURE SWITCH WS1
IF REQUIRED

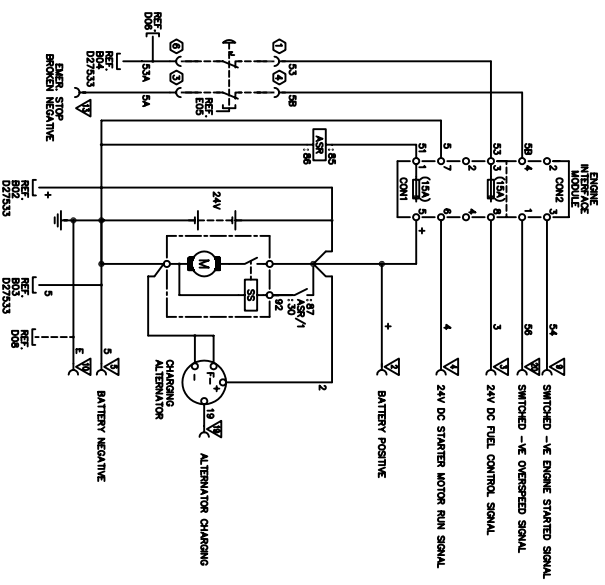
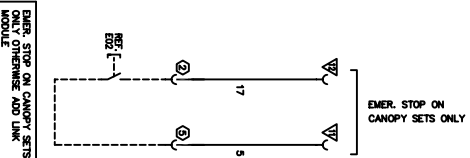
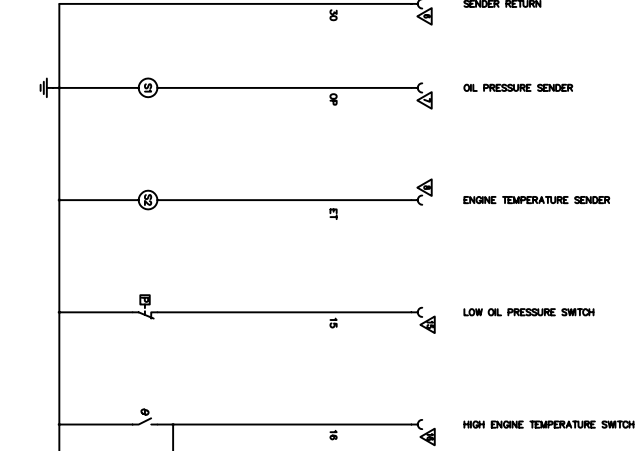
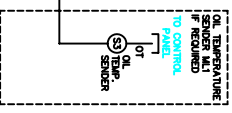
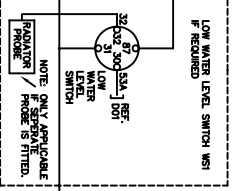
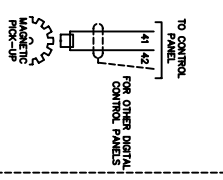
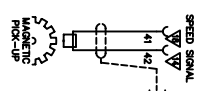
HIGH FUEL LEVEL SWITCH FS3
IF REQUIRED



ENGINE HEATER W/ ALTERNATOR HEATER A/H IF REQUIRED



NOTE: TO AMP FUSE TO BE FITTED IN CONTROL PANEL TO PROTECT ENGINE JACKET WATER HEATER



D	WIRE 30 AND MAG-PICKUP ADDED	24454	J.E.	04/02/05
C	ADDED EARTH SYMBOL TO JACKET WATER HEATER	22774	G.D.C.	14-11-03
B	FS2 OPTION AMENDED, EM & LINK MODULE PART NOs REMOVED	21239	G.C.T.	14/10/02
A	FIRST ISSUE	-	-	-
ISSUE	DESCRIPTION	ECR/DCR	BY	DATE

THIS DRAWING IS COPYRIGHTED AND MAY BE COPIED ONLY FOR THE PURPOSES OF MAINTAINING THE PURCHASED EQUIPMENT BY THE PURCHASER

DO NOT SCALE

DRN. BY G. THOMPSON
 DATE 10/02/2005
 APPD. BY [Signature]
 TITLE HEU WIRING DIAGRAM OF ENGINE LOOM FOR 24V DC HEU ENGINE C/W EM-SR (R&W, OPTIONALISED)
 ORIGINAL SCALE N.T.S.
 DRAWING NO. D35535
 ISSUE D