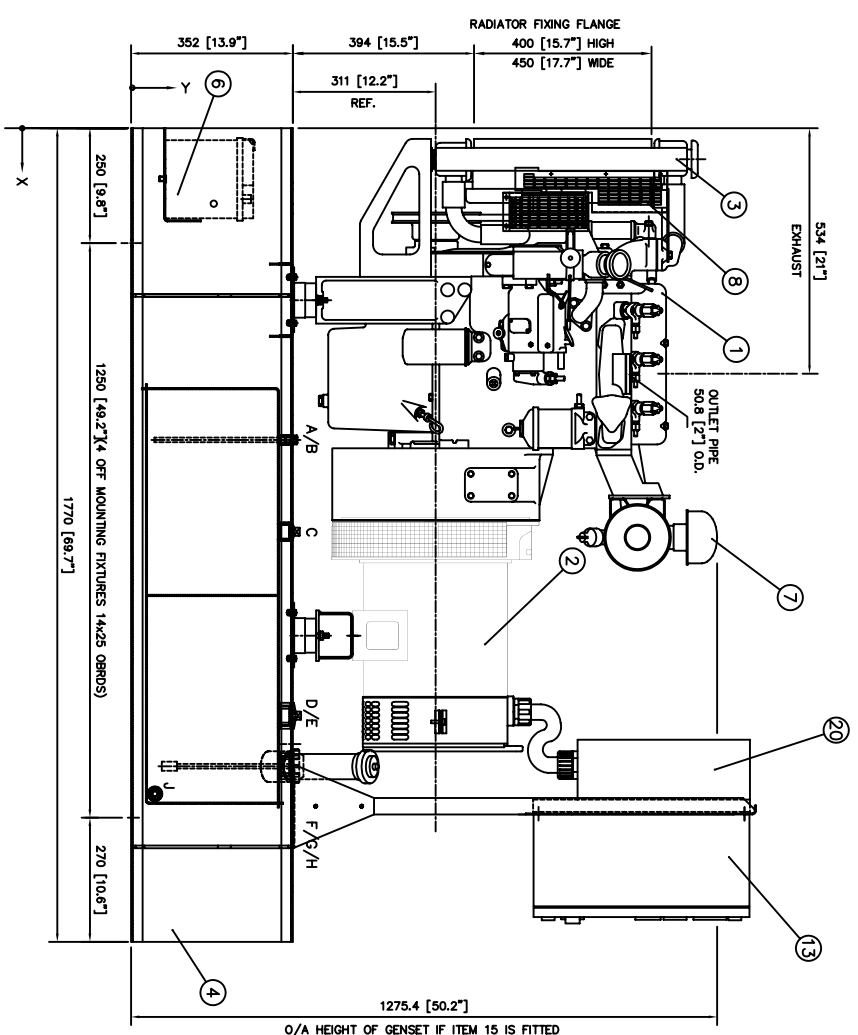


ITEM	DESCRIPTION	DIM X	DIM Y	DIM Z
A	3/8" BSP SOCKET	678	352	155
B	3/8" BSP SOCKET	678	352	555
C	1" BSP SOCKET	878	352	555
D	1" BSP SOCKET	1278	352	155
E	1 1/2" BSP SOCKET	1278	352	555
F	2" BSP SOCKET	1388	352	155
G	1 1/2" BSP SOCKET	1388	352	357
H	1" BSP SOCKET	1388	352	555
J	3/4" BSP SOCKET	1448	52	68

GENSET	WEIGHT (kg)		C of G		
	(WITH OIL)	(WITH OIL & WATER)	X	Y	Z
ENG/ALT	640	680	757	704	
31524/1014Q	640	640	722	705	
31524/1014S	650	670	789	705	
31524/2014B-SP	705	725	789	732	

NOTE: WEIGHTS AND COG TO BE CONFIRMED



NOTE: ALL DIMENSIONS ARE IN MM & [INCHES]

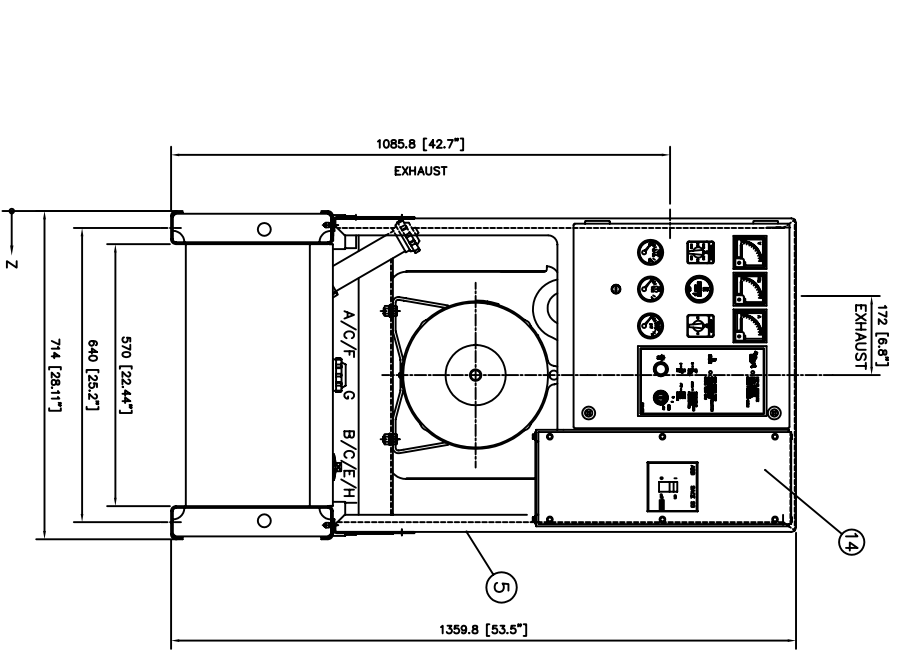
ITEM	DESCRIPTION	REV	DATE	
F	TERMINAL BOX MOUNTED ON PANEL STAND REAR AND FLYING LEADS ALT	207/3	C.M.	28/11/01
E	EXTENDED BASE BY DOWN TO SPLIT MODULAR CONTROL UNIT	06/8	Y.S.F	20/09/00
D	EXHAUST TUBE 20x24x4mm WIRE (110-27x110-61/110-422 & 110-281)	-	S.F	27/04/99
C	EXHAUST DIA TUBE 20 WAS L11014-SP	-	S.F	20/09/98
B	TIEB 24 ADDED, OVERALL HEIGHT ADDED	-	S.F	30/03/98
A	FIRST ISSUE	-	-	-
ISSUE	DESCRIPTION	REV <td>DATE</td>	DATE	
1		0	0	

ITEM	DESCRIPTION	REV	DATE
1		0	0
2		0	0
3		0	0
4		0	0
5		0	0
6		0	0
7		0	0
8		0	0
9		0	0
10		0	0
11		0	0
12		0	0
13		0	0
14		0	0
15		0	0
16		0	0
17		0	0
18		0	0
19		0	0
20		0	0

ITEM	DESCRIPTION	REV	DATE
1		0	0
2		0	0
3		0	0
4		0	0
5		0	0
6		0	0
7		0	0
8		0	0
9		0	0
10		0	0
11		0	0
12		0	0
13		0	0
14		0	0
15		0	0
16		0	0
17		0	0
18		0	0
19		0	0
20		0	0

ITEM	DESCRIPTION	REV	DATE
1		0	0
2		0	0
3		0	0
4		0	0
5		0	0
6		0	0
7		0	0
8		0	0
9		0	0
10		0	0
11		0	0
12		0	0
13		0	0
14		0	0
15		0	0
16		0	0
17		0	0
18		0	0
19		0	0
20		0	0

ITEM QTY.	DESCRIPTION	DMC /PART No.	ITEM QTY.	DESCRIPTION	DMC /PART No.
* 15 1	LVI - LUBE OIL DRAIN ASSY.	MGS2888	1	ENGINE - PERINS 3.1524	MGS3873
* 16 1	WY - COOLANT DRAIN ASSY.	MGS2884	2	ALTERNATOR	MGS3873
* 17a 1	DECAL ARR. - (Unimperial Labels)	MGS3055	3	RADIATOR ASSEMBLY	MGS2882
* 17b 1	DECAL ARR. - (G & W Labels)	MGS3062	4	BASEFRAME ASSY	MGS3300
* 17c 1	DECAL ARR. - (OLY Labels)	MGS3063	5	PANEL STAND ASSY. (IF FITTED)	MGS2449
* 18a 1	DECAL ARR. - (OMA Labels)	MGS3064	6	BATTERY TRAY ASSEMBLY	MGS2484
* 18b 1	CEC GUARDS 3.1524	MGS2840	7	AIR FILTER ASSEMBLY	MGS2685
* 19a 1	TERMINAL BOX	MDA3370	8	SPLIT FAN GUARD ASSEMBLY	MGS2638
** 20 1	NOT SHOWN		9	FUEL LINE ARRANGEMENT	MGS2731
**	PANEL STAND MOUNTED TERMINAL BOX APPLIES TO LENOX SOMER 1000 SERIES ALTERNATORS ONLY.		10	COUPLING ARRANGEMENT	MGS2871
**	2000 SERIES ALTERNATOR NOT SHOWN.		11	ENGINE INTERFACE MODULE UPFIT	MGS2414
			* 12	SENDERS & SENSORS UPFIT	MGS2429
			13	CONTROL PANEL (IF FITTED)	-
			14	CIRCUIT BREAKER (IF FITTED)	-



ITEM	DESCRIPTION	REV	DATE
1		0	0
2		0	0
3		0	0
4		0	0
5		0	0
6		0	0
7		0	0
8		0	0
9		0	0
10		0	0
11		0	0
12		0	0
13		0	0
14		0	0
15		0	0
16		0	0
17		0	0
18		0	0
19		0	0
20		0	0

ITEM	DESCRIPTION	REV	DATE
1		0	0
2		0	0
3		0	0
4		0	0
5		0	0
6		0	0
7		0	0
8		0	0
9		0	0
10		0	0
11		0	0
12		0	0
13		0	0
14		0	0
15		0	0
16		0	0
17		0	0
18		0	0
19		0	0
20		0	0